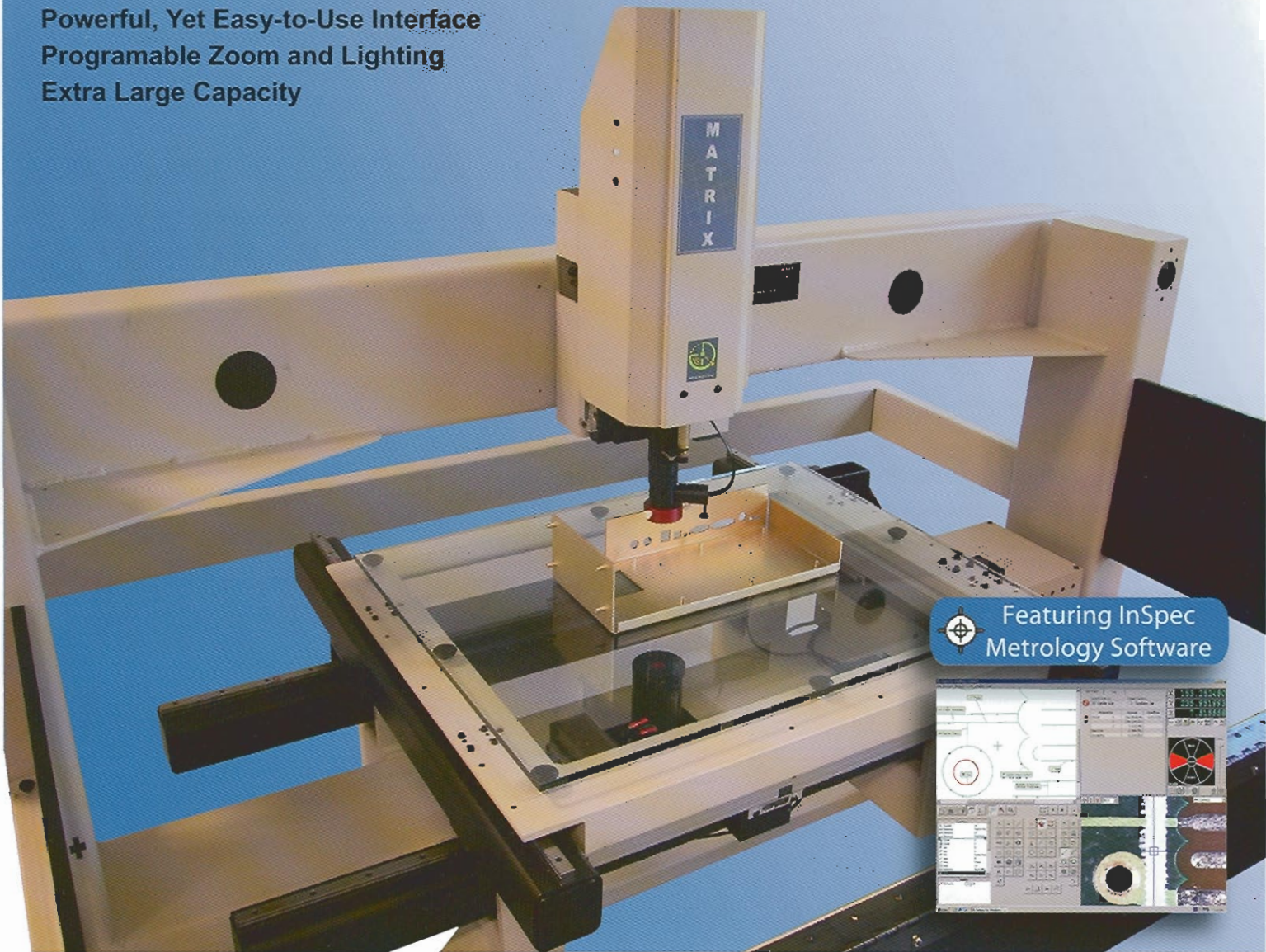


MATRIX VISION MEASURING SYSTEMS

Measure Multiple Parts and Large Parts
Powerful, Yet Easy-to-Use Interface
Programable Zoom and Lighting
Extra Large Capacity



MICRO-VU CORPORATION
PRECISION MEASUREMENT SYSTEMS

MATRIX VISION MEASURING SYSTEMS

The **Matrix** vision systems are fully automated versions of the **Matrix** manual video systems. Vision systems are motorized with video edge detection, programmable lighting, and programmable zoom, all controlled with InSpec metrology software.

- **Extra Large Capacity**

600x450x150 mm (24"x18"x6")

600x450x300 mm (24"x18"x12")

900x600x150 mm (36"x24"x6")

900x600x300 mm (36"x24"x12")



- **InSpec Metrology Software**

- **Software Translators**

DXF Import/Export Included

Excellon Import Optional

Gerber Import Optional

IGES Import Optional

- **Precision Bearings**

Linear Way Bearings, X,Y,& Z

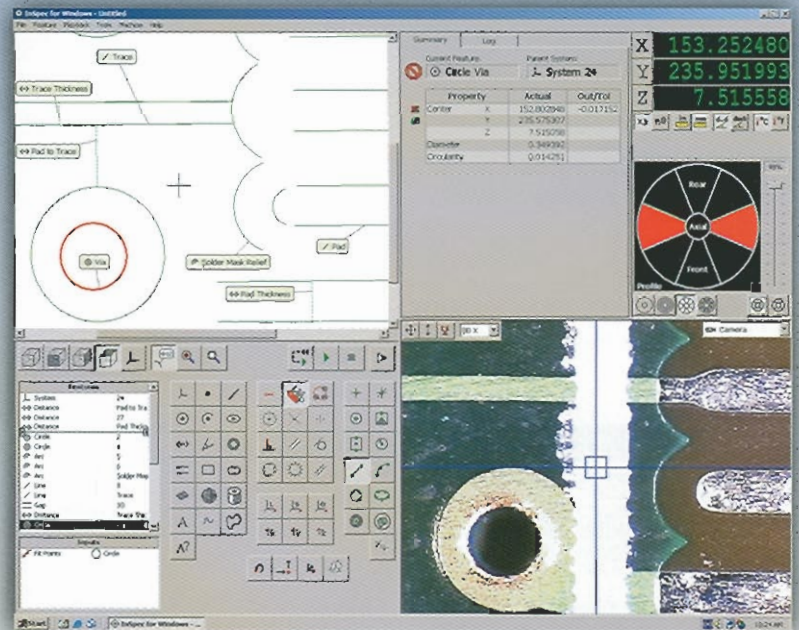
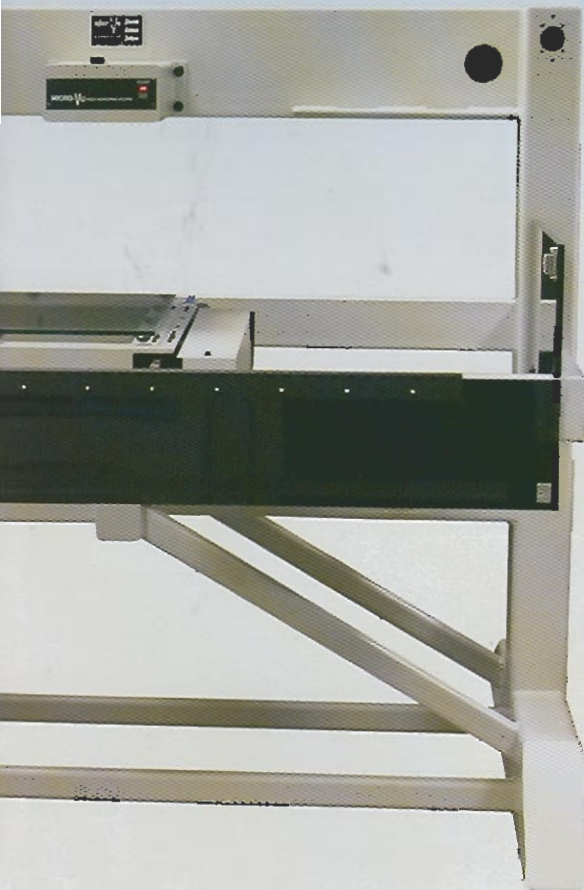
- **Programmable Lighting**

Profile, Back Light

Surface, 4 Quad Top Light

Axial, Through the Lens

IGES Import Optional



InSpec Metrology Software

Powerful Yet Easy-to-Use
Point and Click Programming
Easy Tolerancing and Reporting
Powerful Vision Tools
Schematic and Camera Always Visible
Icons are Centrally Located
Graphical Light Control Interface
Automated Calibration Functions

- **Programmable 6.5:1 Zoom Lens**
Viewed Magnification 20-130x & 40-260x
- **3 Axis CNC Stepper Drive System**
- **Computer Console Included**

MATRIX VISION MEASURING SYSTEMS

Specifications

Physical	Matrix 24x18x6	Matrix 24x18x12	Matrix 36x24x6	Matrix 36x24x12
Measuring Volume	600x450x150mm (24"x18"x6")	600x450x300mm (24"x18"x12")	900x600x150mm (36"x24"x6")	900x600x300mm (36"x24"x12")
External Dimensions	L1675xW1200xH1600mm (66"x47"x63")	L1675xW1200xH1725mm (66"x47"x69")	L2285xW1525xH1650mm (90"x60"x65")	L2285xW1525xH1725mm (90"x60"x69")
Weight	433kg (950lb)	500kg (1000lb)	554kg (1200lb)	650kg (1450lb)
Capacity	100kg (220lb)	100kg (220lb)	100kg (220lb)	100kg (220lb)
Stage and Frame	Steel			
Ways	Linear Ways X,Y, & Z			
Motion Control	CNC Stepper with Mouse and Pendant Control			
Power Requirements	93-264 VAC, 47-63 Hz, 10 Amp max.			

Performance	Matrix 24x18x6	Matrix 24x18x12	Matrix 36x24x6	Matrix 36x24x12
X,Y Accuracy	U = 7.0+L/30 μ m	U = 7.0+L/30 μ m	U = 10.0+L/30 μ m	U = 10.0+L/30 μ m
Z Accuracy	U = 5.0+L/25 μ m	U = 5.0+L/20 μ m	U = 5.0+L/25 μ m	U = 5.0+L/20 μ m
X,Y Repeatability	7.0 μ m (.000280")	7.0 μ m (.000280")	10.0 μ m (.000400")	10.0 μ m (.000400")
Z Repeatability	5.0 μ m (.000200")	5.0 μ m (.000200")	5.0 μ m (.000200")	5.0 μ m (.000200")
X,Y Acceleration	100mm/s ² (4"/s ²)			
Z Acceleration	100mm/s ² (4"/s ²)			
X,Y Speed	50mm/s ² (2"/s ²)			
Z Speed	50mm/s ² (2"/s ²)			
Resolution	2.0 μ m (0.000080")			

Resolution	Matrix 24x18x6	Matrix 24x18x12	Matrix 36x24x6	Matrix 36x24x12
Video	High Resolution B&W			
Lighting	Programmable Surface Quadrants, Profile and Axial			
Optics	6.5:1 Programmable Zoom, 0.7x-4.5x			
Software	InSpec of Windows Metrology Software			
Video	20x-130x & 40x-260x			
Warranty	1 Year			

¹ Based on Micro-Vu Accuracy & Repeatability specification using 2.0 micron scales

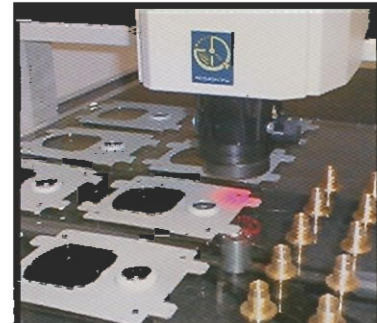
² Mechanical accuracy of z: focus accuracy depends on the part surface

³ Magnification depends on monitor size and resolution

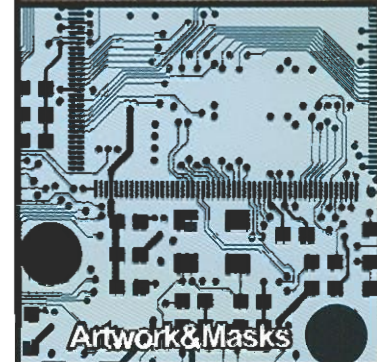
⁴ MicroVu may substitute upgraded components without notice

⁵ L is the measured length in mm; the resulting values are in microns

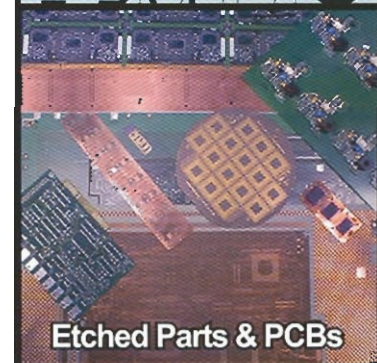
If You Can See It,



Multiple Part Inspection



Artwork & Masks



Etched Parts & PCBs



Sheet metal & Stencils

We Can Measure It!



Micro-Vu Corporation

7909 Conde Ln. Windsor, CA 95492

Ph 707 838 6272 Fx 707 838 3985

E-mail: sales@microvu.com

www.microvu.com



Florida Metrology

Phone: 888-994-2437 Fax: 904-808-8470

www.floridametrology.com

Sales & Service of Dimensional & Visual Inspection Products