

## SPECIFICATIONS:

Physical	Excel 4120	Excel 4220	Excel 5120	Excel 5220	Excel 6120	Excel 6220
Measuring Volume	600x600x150 mm (23.6"x23.6"x5.9")		900x1200x150 mm (35.4"x47.2"x5.9")		1200x1500x150 mm (47.2"x59.0"x5.9")	
External Dimensions	L1675xW1200xH1600 (66"x47"x63")		L2285xW1525xH1650 (90"x60"x65")		L2590xW1855xH1725 (102"x73"x68")	
Weight	910kg (2000 lb)		2050kg (4500 lb)		3410kg (7500 lb)	
Capacity	100kg (220 lb)		100kg (220 lb)		100kg (220 lb)	
Stage	Steel					
Base Material	Granite					
Ways	Unique X&Y Monorail, Monorail Linear Z					
Motion Control	Servo: CNC, Mouse, and Pendant Control					
Power Requirements	93-264 VAC, 47-63 Hz, 10 Amp max.					

Performance	Excel 4120	Excel 4220	Excel 5120	Excel 5220	Excel 6120	Excel 6220
XY Accuracy	U = 3.5+L/300 µm		U = 5.0+L/300 µm		U = 5.5+L/300 µm	
Z Accuracy	U = 3.0+L/150 µm		U = 3.0+L/150 µm		U = 3.0+L/150 µm	
XY Repeatability	3.5 µm (0.000140")		5.0 µm (0.000200")		5.5 µm (0.000220")	
Z Repeatability	3.0 µm (0.000120")		3.0 µm (0.000120")		3.0 µm (0.000120")	
X, Y Acceleration	1000 mm/s <sup>2</sup> (40"/s <sup>2</sup> )					
Z Acceleration	500 mm/s <sup>2</sup> (20"/s <sup>2</sup> )					
X, Y Speed	500 mm/s (20"/s)					
Z Speed	150 mm/s (6"/s)					
Scale Resolution	0.5 µm (0.000020")					

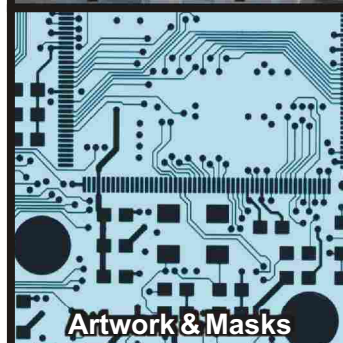
Features	Excel 4120	Excel 4220	Excel 5120	Excel 5220	Excel 6120	Excel 6220
Video	Hi-Res B&W	Hi-Res Color	Hi-Res B&W	Hi-Res Color	Hi-Res B&W	Hi-Res Color
Illumination Source	Red LEDs	White LEDs	Red LEDs	White LEDs	Red LEDs	White LEDs
Lighting	Surface, Profile, and Axial					
Optics / Magnification	12:1 Programmable Zoom / ~17x-400x					
Software	InSpec for Windows Metrology Software					
Computer	1.2GHz, 256 MB RAM, Windows 2000, CD-RW, Ethernet Card					
Environmental	20°C (68°F) ±2°, 30-80% Humidity					
Warranty	1 Year Parts and Service					

<sup>1</sup> Based on Micro-Vu Accuracy & Repeatability specification using 0.5 micron scales  
<sup>2</sup> Mechanical accuracy of z; focus accuracy depends on the part surface  
<sup>3</sup> Magnification depends on monitor size and resolution  
<sup>4</sup> Micro-Vu may substitute upgraded components without notice

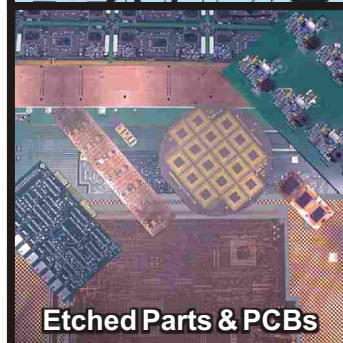
## If You Can See It ...



Multiple Part Inspection



Artwork & Masks

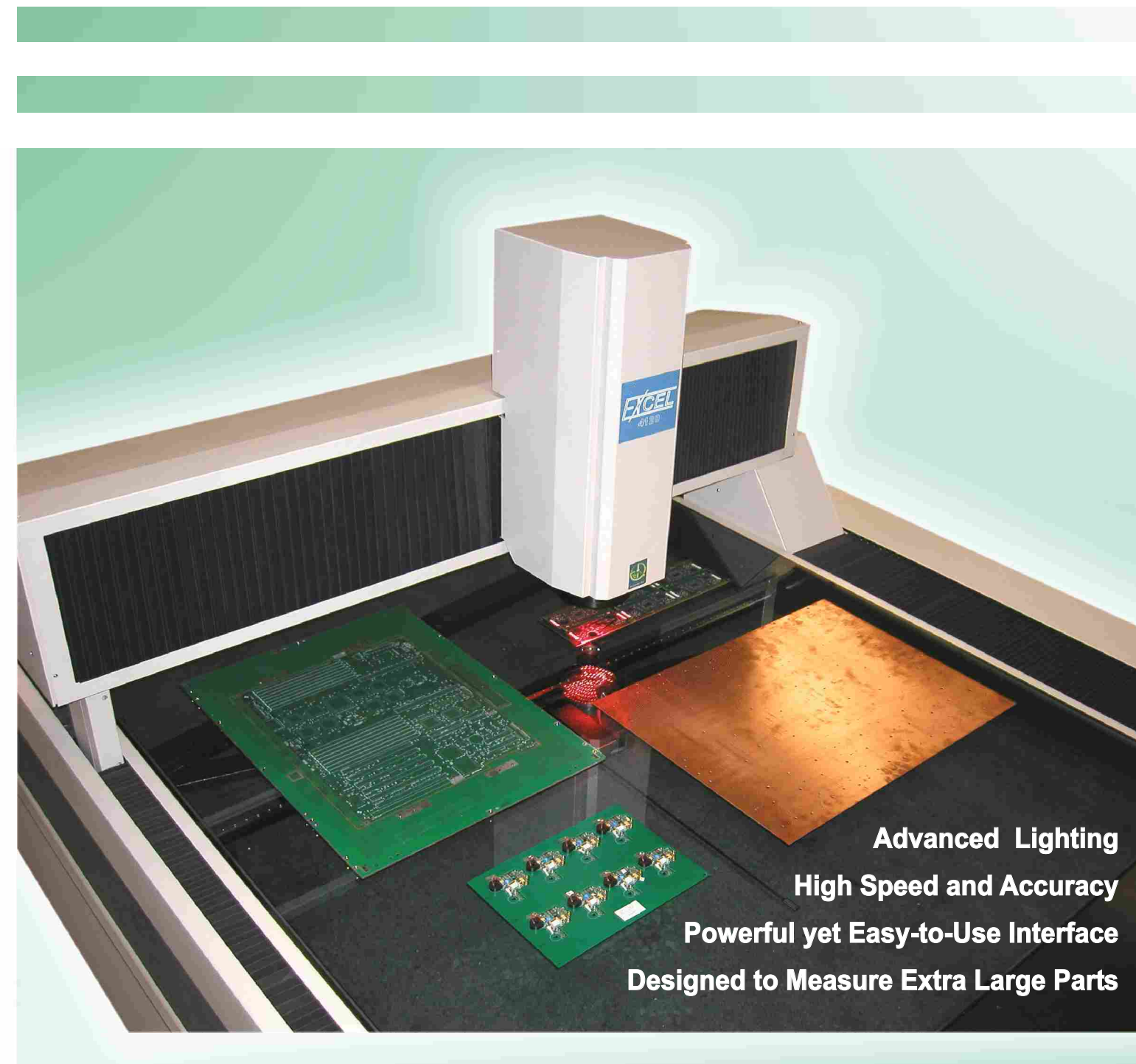


Etched Parts & PCBs



Sheet-metal & Stencils

**We Can Measure It!**



**Advanced Lighting**  
**High Speed and Accuracy**  
**Powerful yet Easy-to-Use Interface**  
**Designed to Measure Extra Large Parts**



## Micro-Vu Corporation

7909 Conde Ln. Windsor, CA 95492 USA  
 Ph 707 838 6272 Fx 707 838 3985  
 E-mail: sales@microvu.com  
 Website: <http://www.microvu.com>

# MICRO-VU CORPORATION

PRECISION MEASUREMENT SYSTEMS

The Excel Measuring Centers™ employ new technologies to provide high speed and accuracy on reliable and affordable measurement systems.

The gantry style vision systems can accommodate large parts and fixtures of multiple parts while maintaining a relatively small footprint.

"Monorail" linear way bearings, dual encoder servo control, and sophisticated electronics allow these systems to reach 20 in/sec.

With the advanced lighting, zoom control, and edge detection tools included in the latest InSpec Metrology Software, the Excel Measuring Centers™ can handle the most demanding measurement applications.

#### Large and Extra Large Sizes

- 600 x 600 x 150 mm (23.6" x 23.6" x 5.9")
- 1200 x 900 x 150 mm (35.4" x 47.2" x 5.9")
- 1500 x 1200 x 150 mm (47.2" x 59.0" x 5.9")

12x Motorized  
Zoom Lens

Programable Lighting

- Profile (Backlighting)
- Surface (Ring Light)
- Axial (Thru the Lens)

Multifunction  
Pendant

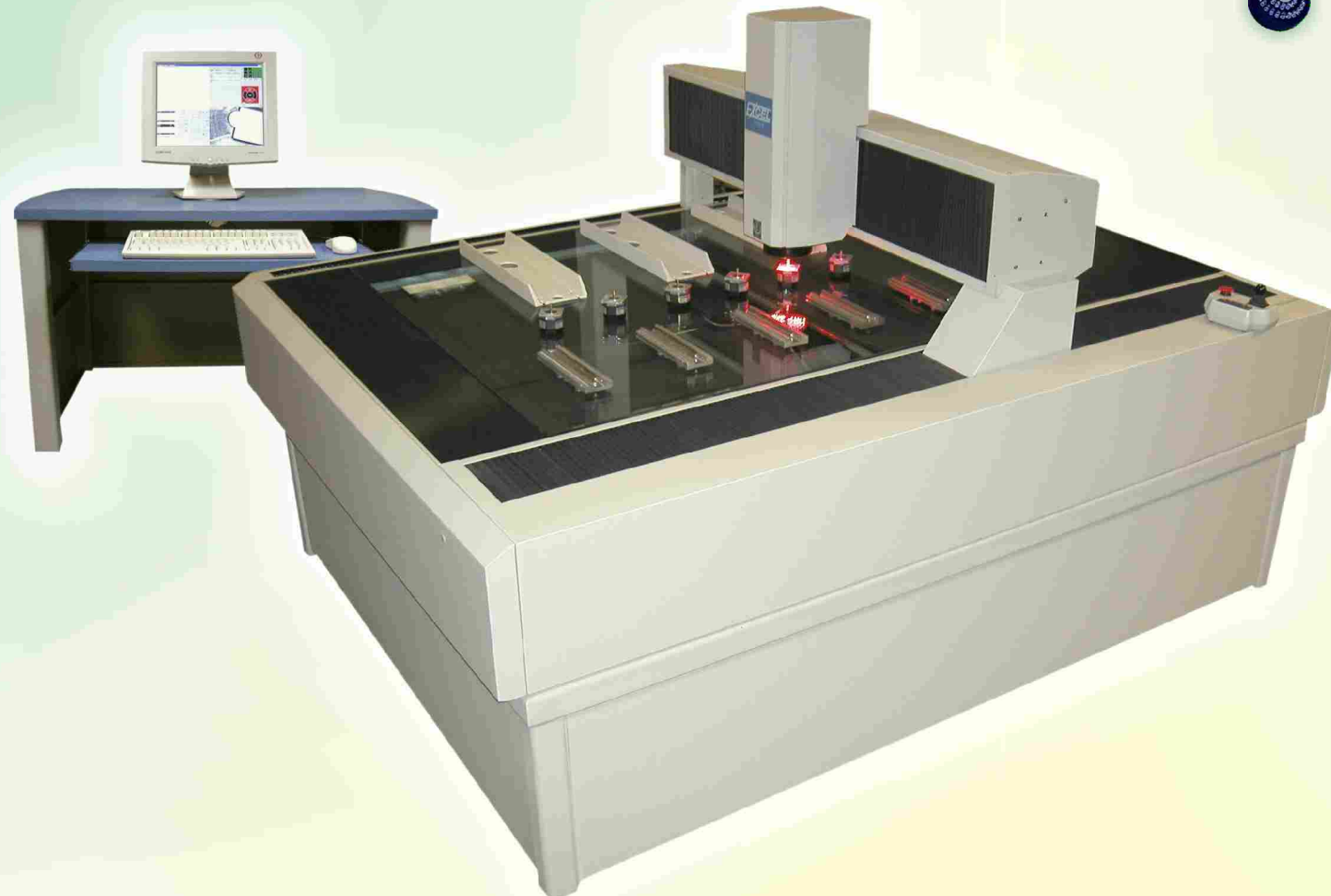
High Speed Servo  
Capstan Drives

Dual Encoders

Monorail Linear  
Bearing Design

Computer  
Console  
Included

InSpec  
Metrology  
Software



#### Macro Ring Light

- Enhances Difficult-to-See Edges
- Focuses Light at 27°-75°
- Controls 5 Rings, 8 Sectors, and 40 Segments



#### Standard Ring Light

- Enhances Edges
- Focuses Light at 47°-75°
- Controls 2 Rings, 8 Sectors, and 16 Segments



#### Monorail Design

- Uses Large Linear Way
- Improves Drive Stiffness
- Minimizes Maintenance



#### Lighting Features

- Intuitive Graphic Controls
- Ring, Sector, Segment Selection
- Long Life LEDs, ~10,000hrs
- White Lighting for Color
- Red Lighting for B&W



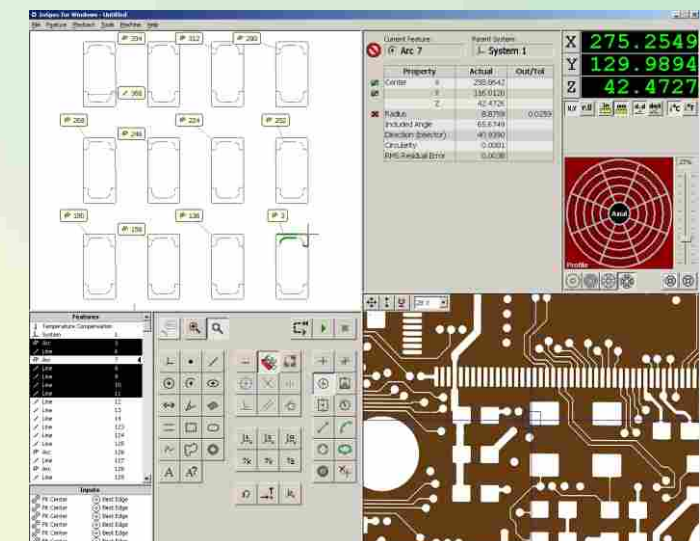
#### State-of-the-Art Electronics

- USB Connection
- Multi-function Pendant
- DSP Technology
- On-Board Memory
- High Reliability



#### Tracking Profile Light (Backlight)

- Provides Collimated Light
- Moves with Camera
- Improves Accuracy



#### InSpec Metrology Software

- Powerful Yet Easy-to-Use
- Adaptive Vision Tools
- Point and Click Programming
- Easy Tolerancing and Reporting